

Chair 800 PH

Therapy chair **with feet**
back and leg **moveable with synchronized system**



SEATING

Frequent Usage

Therapy
Relax
Reduced Footprint



FEATURES & SAFETY

Outpatient and inpatient therapy



www.gardhenbalance.it



3 sections

back and leg moveable with synchronized system

Retractable, height-adjustable armrests

Ergonomic seat
that prevents pressure injury

4 feet

stabilize the chair firmly on the ground





Characteristics of the medical device

- Chair withdrawal 3 sections
- Reclining backrest by gas spring controlled by special lever located under the easily accessible seat - h 85 cm - tot 125 cm
- Power-assisted leg rest synchronized to the adjustable backrest by gas spring controlled by special lever located under the seat that can be easily reached
- Height-adjustable 45 x 15 cm retractable, removable armrests
- 4 Feet
- Seat width 55 cm, depth 45 m, footprint 70 cm
- Overall length 90-175 cm
- Anatomical back, seat and leg rest padding with differentiated density
- Upholstery fire retardant class 11M





GBP0801.AP2



IV pole chrome-plated stainless steel with 2 hooks

GBP0801.AP27

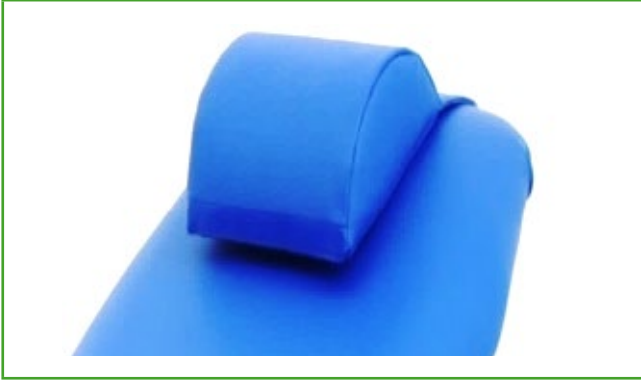


IV pole stainless steel with 2 hooks

GBP0801.AP4



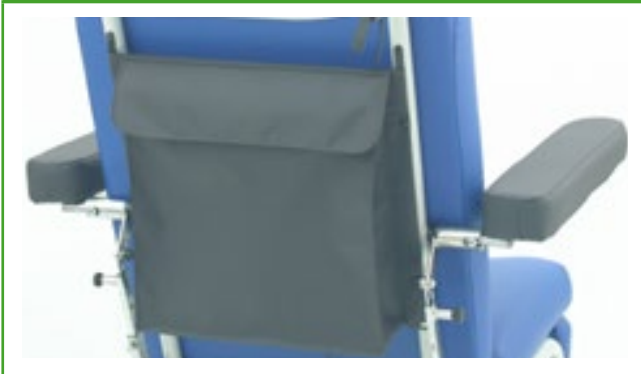
Fixed 25-mm-diameter housing for IV pole.

**GBP0801.AP17**

Headrest removable and adjustable by Velcro strap.

GBP0801.AP19

Chrome-plated steel roll holder

GBP0801.AP20

Document pocket



GBP0801.AP21



Digital lettering and logo plaque

GBP0801.AP23



Support hook for drainage bag.

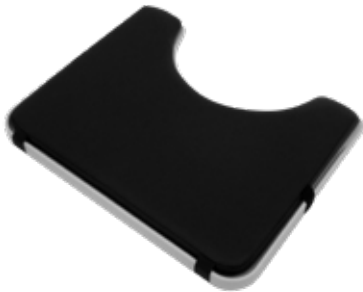
GBP0801.AP22



Oxygen cylinder holder basket.

**GBP0801.AP24**

Table 60x47 cm wrap-around recess and folding edges Dx or Sx

GBP0801.AP26

Removable black leatherette upholstery for hollow coffee table (Code GBP0801.AP24).

GBP0801.AP25

Full black leatherette upholstery for coffee table GBP0801.AP24.



Chair 800 PH

Upholstery colors

The upholstery of the chair is covered with a versatile and highly durable fabric with properties: antibacterial, Class 11M fire retardant, antifungal, environmentally friendly, latex free/phthalate free.

 Blue (standard)

 Light Blue

 Light Yellow

 Green

 Red

 Beige

 Black

 Orange

Technical Sheet

Chair 800 PH

CND and EMDN	V080202
GMDN code	38448
UDI-DI di base	805771740POLPE
No. progressive/R	2538722/R
ID Product	GBP0802SR
Intended Use	Manual medical chair
Weight	34 kg
Max load capacity	180 kg

www.gardhenbalance.it



Gardhen Balance S.r.l

Via G. Luraghi c/o Consorzio Il Sole - lotto S - 80038

Pomigliano d'Arco (NA) - Italy

Tel. +39.081.8692160 pbx - Fax +39.081.8692460

Email: info@gardhenbalance.it

PEC: gardhenbalance@pec.it

Images reproduced in this sheet are for reference only and dimensional values are nominal. It is the manufacturer's right to make changes to the designs without prior notice. Refer to the optional components catalog and/or commercial proposals for identification of standard equipment and selection of any additional components. In case of discrepant data, the content of the commercial proposals shall prevail.
Dep. EN 377 rev. 03/05/2024

